

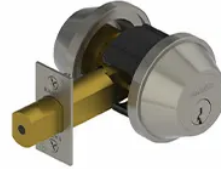


## PRODUCT SPECIFICATIONS

For more information visit [www.hagerco.com](http://www.hagerco.com)

### 3214 - DOUBLE CYLINDER - E2142

3214



## SPECIFICATIONS

<b>Applications</b>	Standard Duty Commercial
<b>Backsets</b>	<ul style="list-style-type: none"> <li>2-3/4" (70 mm) Standard</li> <li>2-3/8" (60 mm) Optional</li> </ul>
<b>Certifications</b>	<ul style="list-style-type: none"> <li>ADA Compliant ANSI A117.1 Accessibility Code</li> <li>UL/cUL Listed for all functions up to 3 hours "A" label single doors</li> <li>UL10C Positive Pressure Rated</li> <li>BHMA Certified ANSI A156.36, Grade 2</li> <li>ANSI A250.13 Severe Windstorm Compliant</li> <li>Miami Dade County, FL NOA #17-1226.23</li> </ul>
<b>Cylinders/Cores</b>	<ul style="list-style-type: none"> <li>Keyed Different - standard</li> <li>Cylinder drilled 6 pin, Keyed 5 pin - standard</li> <li>Other Keying options, including 6 pin keyed, available from factory</li> <li>Zero bit cylinders will be 6 pin keyed</li> <li>SFIC uncombined or combined, brass 6 pin or 7 pin cores sold separately</li> </ul>
<b>Deadbolt</b>	<ul style="list-style-type: none"> <li>1" (25 mm) Throw - Brass with concealed hardened steel roller to prevent sawing or cutting</li> <li>1-1/8" x 2-1/4" (29 mm x 57 mm) square corner faceplate</li> </ul>
<b>Door Thickness</b>	<ul style="list-style-type: none"> <li>1-3/8" - 1-3/4" (35 mm - 45 mm) - Standard</li> <li>2-1/4" (57mm) - Optional for conventionally keyed only</li> <li>1-3/4" (35 mm) only - 3214 SFIC and 3216</li> </ul>
<b>Exposed Trim</b>	Wrought Brass, Bronze or Stainless Steel
<b>Finishes</b>	US3, US4, US10B, US26D and US32D
<b>Functions</b>	Double Cylinder (E2142)
<b>Keys</b>	Two operating keys supplied per lock
<b>Keyway</b>	Schlage C - Standard, other keyways optional
<b>Notes</b>	Non-handed
<b>Options</b>	<ul style="list-style-type: none"> <li>Split Finish</li> <li>Additional Deadbolts and strikes available</li> </ul>
<b>Strikes</b>	<ul style="list-style-type: none"> <li>3930 - 1-1/8" x 2-3/4" (29 mm x 70 mm) no-lip strike - standard</li> <li>3929 - 1-1/4" x 4-7/8" (32 mm x 124 mm) ASA deadbolt strike - optional</li> </ul>

**Warranty**

Lifetime