



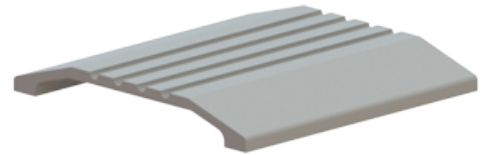
PRODUCT SPECIFICATIONS

For more information visit www.hagerco.com

410S

Threshold - Saddle

Applications



PRODUCT SPECIFICATIONS

Certifications:

BHMA Certified Handicap Accessibility

Fasteners:

#10 x 1-1/2" sheet metal screws, other screw types and anchors available upon request

Finishes:

MIL, DBA, GLD

Fire Rating:

UL Listed

H Height:

1/2" (13 mm)

Notes:

MIL finish thresholds are supplied with zinc plated screws
Color anodized thresholds are supplied with screws plated to match

Options:

Available with Sure-Step non-slip abrasive coating

Specifications:

per linear foot

Warranty:

Five-Year Warranty

H Width:

4" (102 mm)