

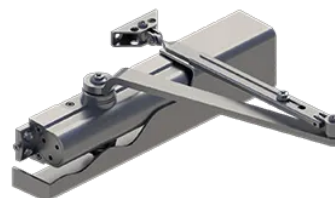


PRODUCT SPECIFICATIONS

For more information visit www.hagerco.com

5200 SERIES GENERAL INFORMATION

5200



SPECIFICATIONS

Applications

- Grade 1 heavy duty surface door closer adjustable sizes 1–6
- Ideal for schools, hospitals, and other high-use environments

Box Quantity

1

Case Quantity

6

Certifications

- BHMA Certified ANSI A156.4, adjustable sizes 1–6
- ADA compliant ANSI A117.1 Accessibility Code
- UL/cUL Listed for up to 3 hours
- UL10C Positive Pressure Rated
- UL10B Neutral Pressure Rated
- 5200 Door Closer EPD

Cover

- Full plastic cover - standard
- Slim line plastic cover - optional
- Full size plated metal cover - optional

Door Thickness

- 1–3/4" (44 mm) - standard
- 1–3/8" - 2–1/4" (36 mm - 57 mm) thick door - optional

Fastener Size – Machine

Test

Fastener Sizes – Door Mount Brackets

Test

Fasteners

- Self-reaming, self-tapping wood and machine screws - Standard.
- Sex nuts and bolts - Standard.

Features

Test

Finishes

- ALM, BLK, BRZ, DBZ, GOL
- Rust inhibiting primer - Standard

Handing

Non-handed

Holding Force

Test

Includes

Test

Material

Aluminum Alloy

Maximum Door Weight

250 lbs.

Notes

- To maximize hinge life and assist in achieving ADA compliance, Hager recommends the use of anti-friction or ball bearing hinges with our door closer products.
- The recommended temperatures for prolonged closer use is between -40° F (-42° C) and 150° F (66° C)
- Any certified BHMA/ANSI A156.4 door closer, regardless of manufacturer, that is installed and adjusted based on ADA or other reduced opening force requirements may not provide sufficient power to reliably close and latch a door
- If arms are ordered separately, there will be a significant difference in price than if purchased with a closer as a complete assembly. See adders for more information (add the list price of the option to the list price of the closer and take standard discounts).
- Accessories may not be available in all finishes. Please contact Hager for availability and lead time.

Optional Arms

- Tri-Pack Arm (Regular, Top Jamb and Parallel with Parallel Arm Bracket)- Standard
- Hold Open Arm (HO) - 5910
- Pull Side Stop Arm (PSS) - 5926
- Pull Side Hold Open Stop Arm (PSHOS) - 5927
- Extra Heavy Duty Arm (HD) - 5911
- Extra Heavy Duty Stop Arm (HDS) - 5907
- Extra Heavy Duty Hold Open Stop Arm (HDHOS) - 5906
- Extra Heavy Duty Hold Open Arm (HDHO) - 5912
- Extra Heavy Duty Cushion Stop Arm (HDGS) - 5957
- Extra Heavy Duty Hold Open Cushion Stop Arm (HDHOS) - 5956
- Hold Open Stop Track Arm (HOTA)
- Non-Hold Open Stop Track Arm (NHOTA)
- Double Egress Hold Open Track Arm (DEHOTA)
- Double Egress Non-Hold Open Track Arm (DENHOTA)

Optional Brackets

- Hold open parallel arm bracket
- Extra clearance parallel arm bracket

Product Description

Grade 1 Heavy Duty Door Closer

Springs

- One piece seamless steel spring tube
- Double heat-treated, steel-tempered springs
- Precision-machined, heat-treated steel piston

Valves

- Adjustable backcheck, sweep, and latching valves- standard
- Delayed action valve - optional
- All valves are staked

Warranty

Lifetime warranty