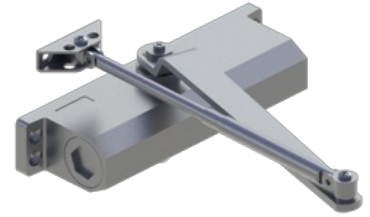


## 5400 Series

### Grade 2 Standard Duty Surface Door Closer



- Ideal for light duty commercial applications
- To maximize hinge life and assist in achieving ADA compliance, Hager recommends the use of anti-friction or ball bearing hinges with our door closer products

#### Notes:

- Standard package contains standard screw pack, 5900 parallel arm bracket, and 5902 SNB screw pack for 1-3/4" (44 mm) door
- Precision machined, heat treated steel piston
- Triple heat treated steel spindle



## PRODUCT SPECIFICATIONS

#### CERTIFICATIONS:

- BHMA Certified ANSI A156.4, sizes 2, 3, 4, 5 - Must specify
- UL/cUL Listed for up to 3 hours
- UL10C Positive Pressure Rated
- UL10B Neutral Pressure Rated
- Five-year warranty

#### MATERIAL:

- Aluminum alloy
- The recommended temperatures for prolonged closer use is between -40° F (-42° C) and 150° F (66° C)

#### SPRINGS:

- Double heat treated steel, tempered springs

#### VALVES:

- Adjustable latching and sweep speed valves
- Adjustable backcheck valve - Optional
- Staked valves - Standard

#### HANDING:

- Non-Handed

#### ARMS & BRACKETS:

- Tri-Pack - Regular, parallel, and top jamb arm mount - standard
- 15% power adjustment in standard arm for regular and top jamb mount

#### FASTENERS:

- Self-reaming self-tapping wood and machine screws
- Sex nuts and bolts

#### DOOR THICKNESS:

- 1-3/4" (44 mm) - Standard
- 1-3/8" - 2-1/4" (36 mm - 57 mm) - Optional

#### FINISHES:

- ALM. BLK, BRZ, and GOL are available with minimum order quantities and extended lead times, please contact Hager for availability.

#### COVER:

- Pinion cap (no cover)

#### NOTES:

- Maximum door weight is dependent on size selected
- Size 2 - 80 lbs.
- Size 3 - 135 lbs
- Size 4 - 175 lbs
- Size 5 - 200 lbs

#### EPD:

- [Door Closer Environmental Product Declaration](#)